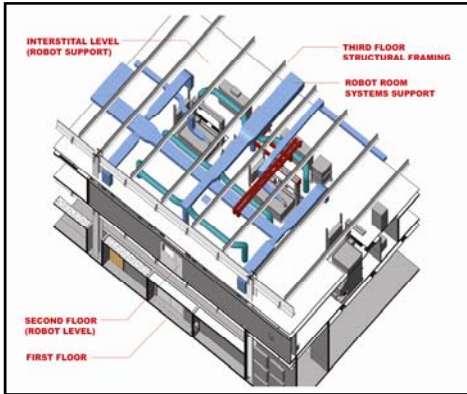


Building Information Modeling (BIM)



New Approach to Architectural / Engineering Design

- Lower First Costs
- Compressed Construction Timelines
- Reduced Operational Costs
- Enhanced Project Management, Coordination, Integration
- 3D Models Improve Visualization / Communication
- More Robust / Accurate Documentation Helps to Predict Performance

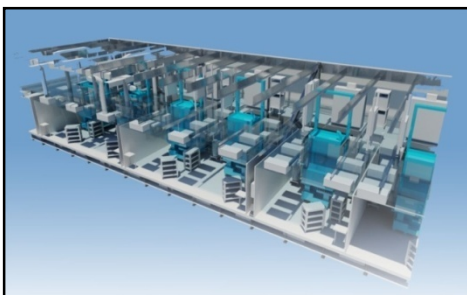
Building:

- “Build” the project virtually inside the computer
- Check the virtual BIM model for accuracy
- Build the “real” project accurately from the virtual BIM model
- “Build it twice”, once in the computer, once in the field.



Information:

- Database-driven platform that tracks all project design information and manages it in a single file location.
- Quantify the project, i.e. material take-offs, cost estimates, project phasing etc.
- Real-time spreadsheet and schedule generation via database



Modeling:

- Having the ability for the owner, contractor, and designer to collaborate and visualize like never before.
- Collectively sharing BIM model data between owner and contractor to better understand the project in the form of 3D model data
- IPS's design team is integrated, all disciplines work on a single model collectively for complete project coordination where all MEP systems and architectural elements can be viewed in 3D.